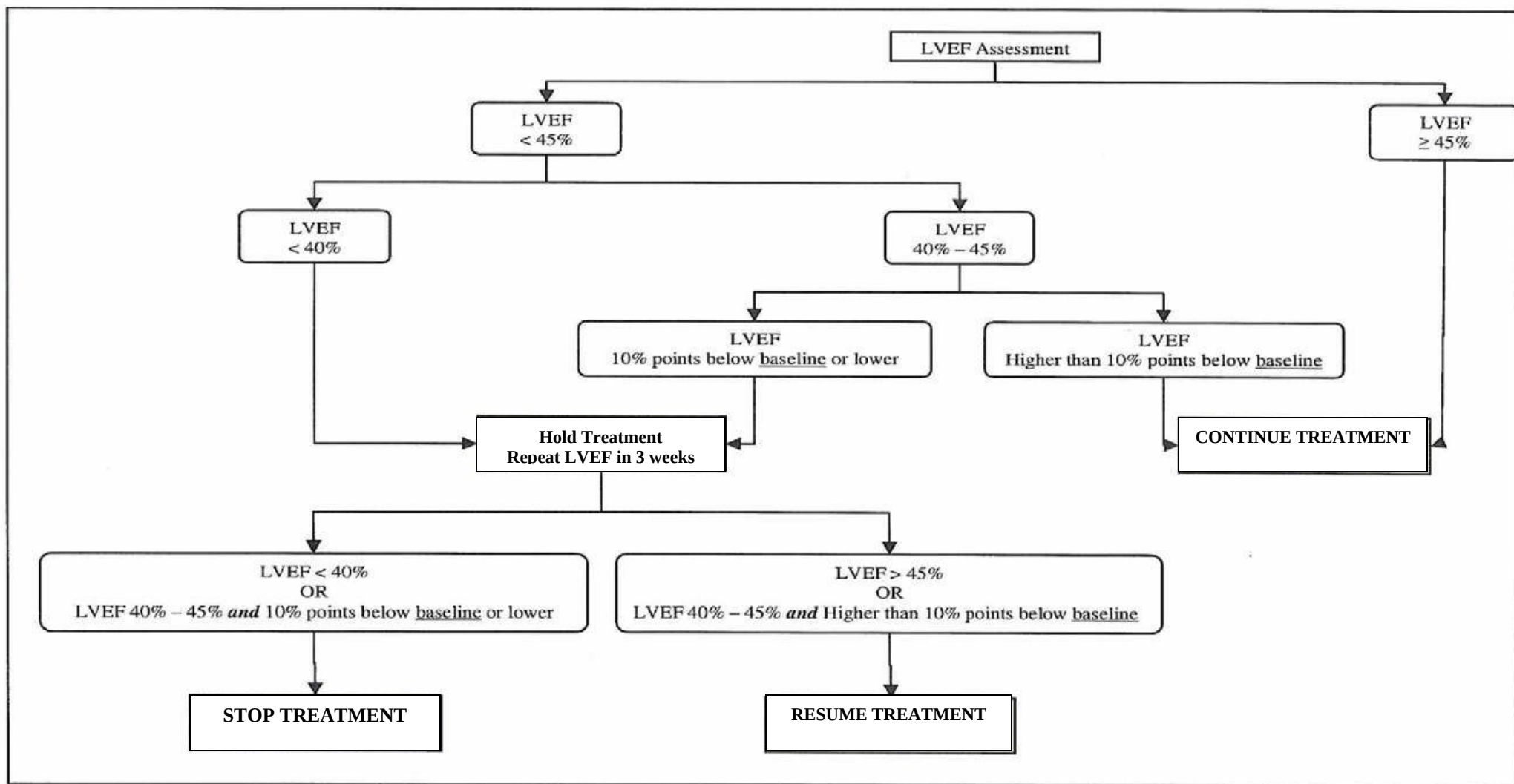


Algorithm for Continuation and Discontinuation of Pertuzumab and Trastuzumab based on LVEF assessments (for use with BRE-032)



Disclaimer: This document is for use only within Kent and Medway. No responsibility will be accepted for the accuracy of this information when used elsewhere.

Written by S Wade/C Waters
 Approved by Breast NOG
 Version 1 (07/09/2016) **Page 1 of 1**

N.B. Version numbers re-started from 1 when adverse reaction information separated from proforma

Written by S Wade/C Waters
Approved by Breast NOG